

# EasyDrink

## Quick Start Guide



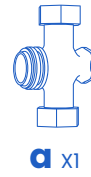
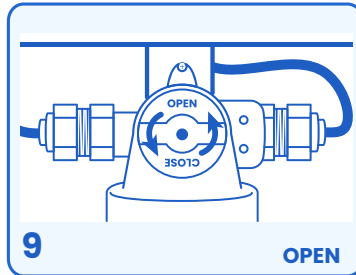
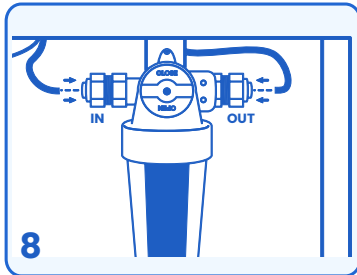
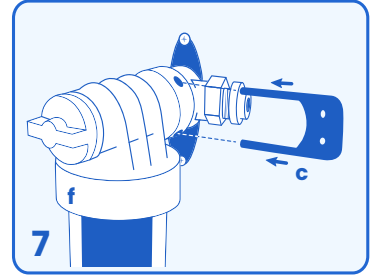
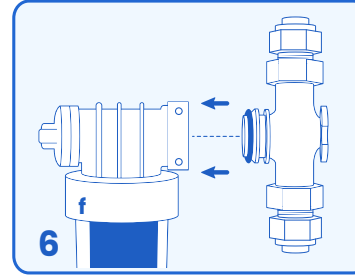
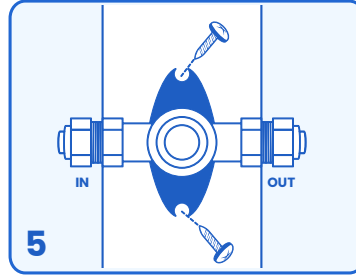
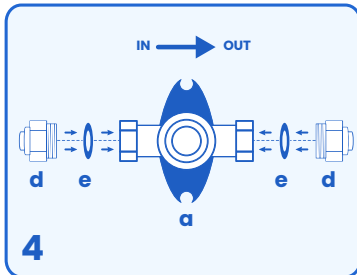
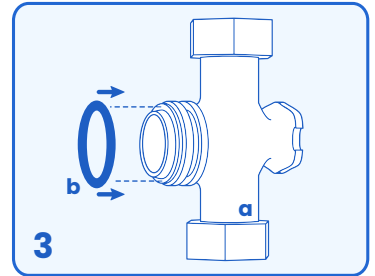
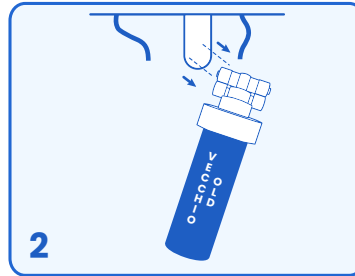
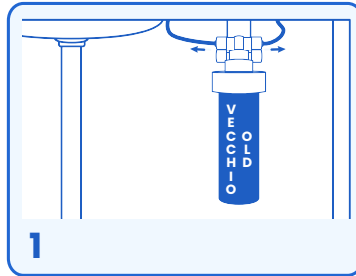
## Installazione Installation

www.mantaecologica.com

### EasyDrink Retrofit

Ad ogni smontaggio mantenere gli O-Ring LUBBRIFICATI con grasso silconico.

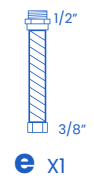
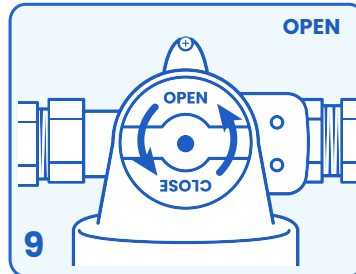
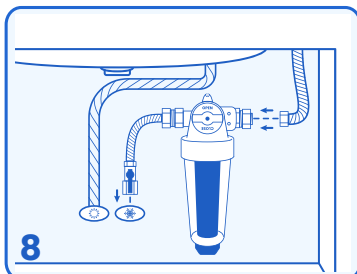
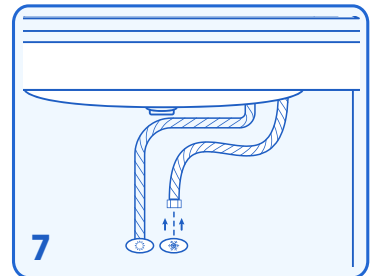
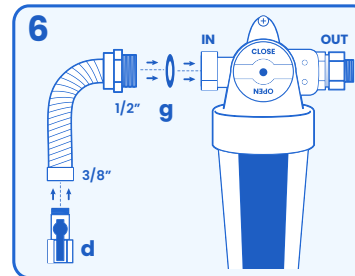
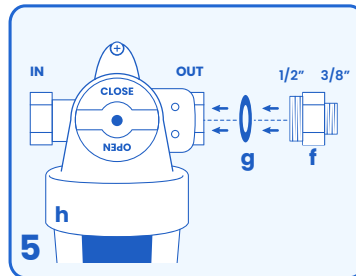
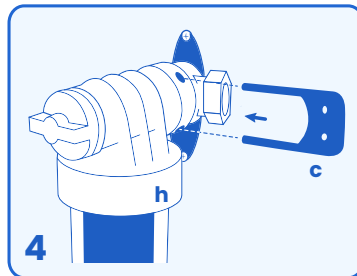
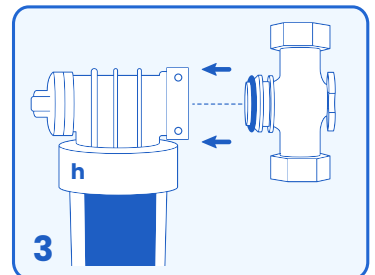
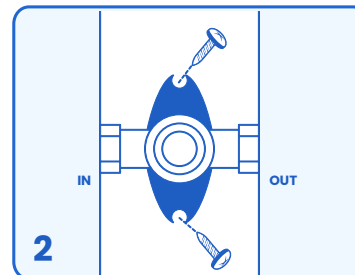
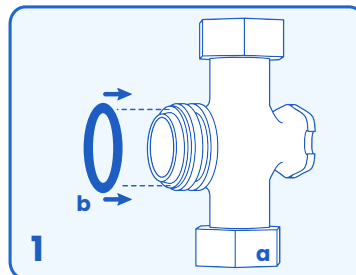
At each disassembly, maintain the O-Rings lubricated with silicone grease.



### EasyDrink New

Ad ogni smontaggio mantenere gli O-Ring LUBBRIFICATI con grasso silconico.

At each disassembly, maintain the O-Rings lubricated with silicone grease.



# Garanzia a Vita

La garanzia copre a vita tutti i difetti di fabbrica.

Rimane valida effettuando la normale **manutenzione del filtro**: sufficiente sostituire la cartuccia annualmente secondo quanto previsto dal manuale e registrarne l'acquisto.



Scansiona  
il QR-Code

Scopri tutte le informazioni

# Lifetime Warranty

The warranty covers all manufacturing defects for life.

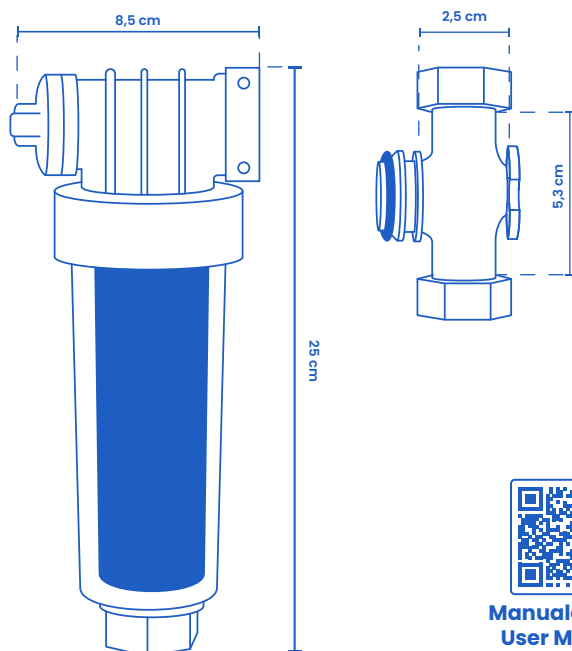
It remains valid provided **regular maintenance of the equipment is carried out**: simply replace cartridges and consumables annually as specified in the manual and register the purchase of the consumable.



Scan the  
QR code

Discover all the information

## Dati Tecnici / Technical Data



Manuale d'uso  
User Manual

### EasyDrink

RACCORDI - FITTINGS	In 1/2" Out 1/2"
FILTRAZIONE - FILTRATION	0,50 µm
ΔP	1,2 bar
TEMPERATURA - TEMPERATURE	30° C
PORTATA - FLOW RATE	5 ÷ 40° C

### EasyDrink Retrofit

RACCORDI - FITTINGS	In 1/2" Out 1/2"
FILTRAZIONE - FILTRATION	0,50 µm
ΔP	1,2 bar
TEMPERATURA - TEMPERATURE	30° C
PORTATA - FLOW RATE	600 L/h

## Store Manta Ecologica



SE NON TROVI LE RICARICHE DAL TUO  
FORNITORE DI FIDUCIA, PUOI ACQUISTARLE  
SUL NOSTRO STORE

[www.mantaricariche.it](http://www.mantaricariche.it)



Applicable  
only in Italy