

★ PCT  
INTERNATIONAL  
PATENT ★



EMERGENCY CAP



360 ° freely rotatable attachment



Quick coupling and release



Direct docking after the counter or softener

## TECHNICAL SPECIFICATIONS

IN/OUT FITTING	IN 3/4" F - OUT 3/4" F	IN 1" F - OUT 1" F
MAX PRESSURE	6 bar	6 bar
FILTRATION	90 µm	90 µm
FLOW RATE (ΔP 0,2 BAR)	3 m³/h	3 m³/h
ROOM TEMPERATURE	5 - 40 °C	5 - 40 °C
USE	Drinking water/Technical	Drinking water/Technical
MATERIAL	PA-PC-PE	PA-PC-PE
REFILL CAPACITY	130 m³/Refill	130 m³/Refill
BUILT-IN SHUT-OFF VALVE	Yes	Yes
DOSAGE LESS THAN	5 mg/L	5 mg/L
DIMENSIONS	H: 295 mm L: 110 mm P: 140 mm	H: 320 mm L: 150 mm P: 160 mm

## PACKAGING SPECIFICATIONS

PACKS PER CARTON	6	6
CARTONS PER EPAL PALLET	56	64
UNITS PER EPAL PALLET	336	384
BOX DIMENSIONS	L: 130 mm P: 97 mm H: 259 mm	L: 130 mm P: 97 mm H: 259 mm
CARTON DIMENSIONS	L: 305 P: 270 H: 270 mm	L: 305 P: 270 H: 270 mm
EPAL PALLET DIMENSIONS	L: 120 P: 80 H: 204cm	L: 120 P: 80 H: 231cm
BOX WEIGHT	680 g	680 g
CARTON WEIGHT	4360 g	4360 g
EPAL PALLET WEIGHT	269.16 Kg	304.04 Kg
CUSTOMS CODE	8421.21.00	8421.21.00
BARCODE	8050616511447	8050616511447

## EASYPHOS DOSING SYSTEM WITH FILTER

Proportional hydrodynamic doser of food-grade polyphosphates for anti-scale and anti-corrosion treatment of water systems or large heat exchangers. With integrated 90 micron stainless steel filter.

3/4" CODE: 400102010  
1" CODE: 400102020

## FEATURES

1. Anti-friction tap: it does not harden over time and can be operated without tools. Plus it is extremely intuitive to use.
2. Simply unscrew to replace the cartridge, with no ring nuts or bayonet fittings.
3. Pure product: there is no unnecessary water in the cartridges, this allows you not to pay more and/or replace the cartridge too often. The pre-mixing chamber dilutes the dosing agent with the water in the system, injecting a liquid solution into the equipment to be protected.
4. No overdosage: the Vortex system absorbs pressure in the event of water hammers.

Cartridge consumption is proportional to water consumption.

The autonomy of a refill calculated for a household of 3 people is approximately one year.

## BENEFITS

- Designed to protect boilers, water heaters, washing machines, dishwashers, general heat exchangers from calcareous deposits and corrosion
- Extends boiler life
- Energy saving thanks to the absence of deposited limestone
- Maintain water potability

## ADVANTAGES

- Small size
- EASY FIT: no screws and lock nuts to attach/detach the dosing body
- Freely rotatable over 360° for any type of installation
- Built-in shut-off valve
- Can be connected after the meter or the softener without any couplings, sleeves or nipples.
- Long lifespan per cartridge: up to 1 year \*
- New dosing mechanism with every change of cartridge
- New filter with every change of cartridge
- More precise dosing thanks to the dual system (Vortex and Venturi)

\* Cartridge with an estimated lifespan of 1 year thanks to the most precise dosing on the market, assuming average consumption for a family of three.

## APPLICATION AND USE

EasyPhos can be installed in domestic hot water supply systems and can also be used for drinking water, both in civil and industrial systems. Easyphos provides effective anti-scale and anti-corrosion treatment, maintaining original performance in terms of heat transfer over time.

- If the water pressure is higher than 6 bar, a pressure reducer must be installed upstream of the dosing system
- During installation, ensure that the pipes are free from machining shavings and other foreign matter

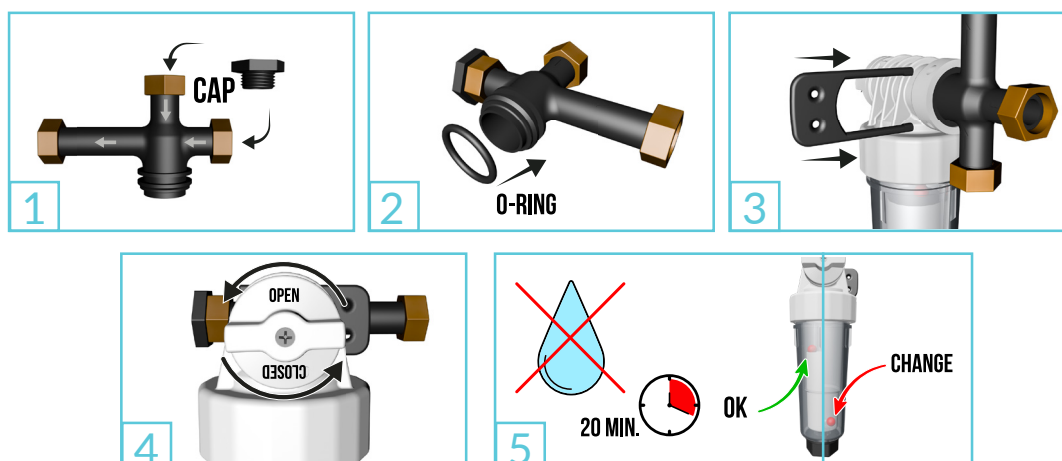
## WHAT YOU NEED FOR INSTALLATION

Typical plumbing equipment for various types of connections.

## CORRECT INSTALLATION

Install the EasyPhos directly after the meter or the water softener.

1. Adapt the fitting to the installation, closing the unused inlet, following the arrows for water flow
2. Place the O-ring on the fitting and connect the body of the EasyPhos with a small turn
3. Insert the doser, locking it with the fork
4. Slowly turn the knob to OPEN
5. Wait 20 minutes before using the water. If red ball on top: cartridge in operation. If red ball at the bottom: cartridge needs to be replaced



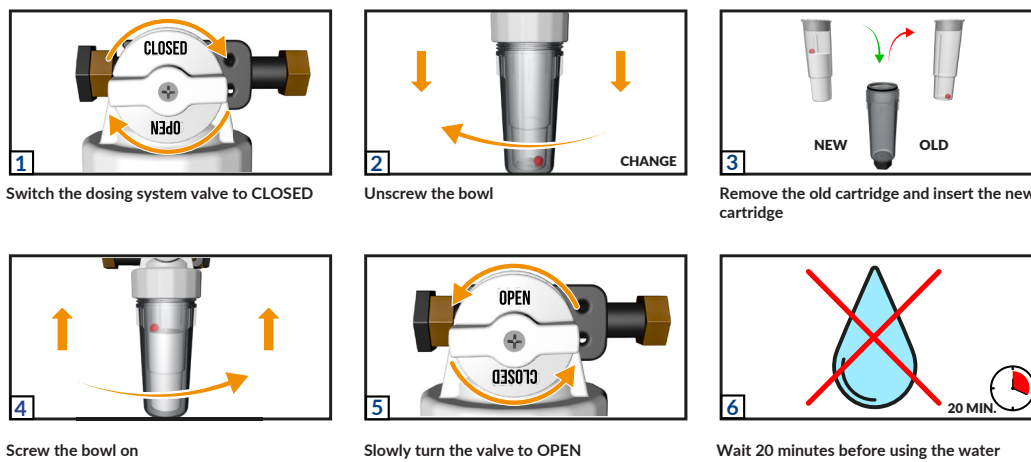
## BOX CONTENTS

- Complete EasyPhos dosing system consisting of two pieces (the bowl and the head)
- 3-way fitting
- Emergency cap
- 3rd way closing cap
- Polyphosphate cartridge with filter

\* To be used if the dosing system needs to be uninstalled for any reason. The exclusive emergency cap allows you to continue using the water throughout the system without the need for an installer.

## MAINTENANCE

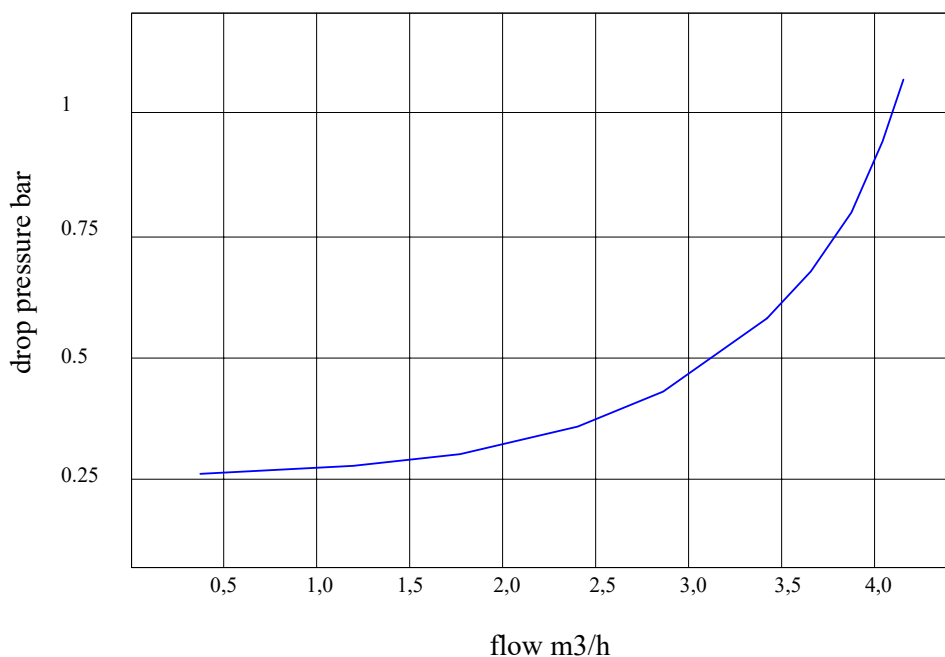
The cartridge should be replaced as soon as the red ball settles on the bottom of the bowl. Wash the bowl with running water to eliminate any residual soiling.



**At each disassembly, maintain the O-Rings lubricated with silicone grease.**

**ΔP**

flow rate



## OFFER DESCRIPTION

Proportional hydrodynamic dosing system with pure, concentrated polyphosphate solution for anti-scale and anti-corrosion treatment in domestic hot water production systems, boilers, water heaters, washing machines, dishwashers and heat exchangers in general.

Fitting with 3 way 3/4" F rotating shafts.

EasyPhos is also equipped with a stainless steel filter integrated in the cartridge.

Capacity of 130 m<sup>3</sup> per refill.

## COMPLIANCE

The EasyPhos device complies with

Italian Ministerial Decree 25/2012 – equipment for the treatment of drinking water. It also complies with the provisions of the UNI-CTI 8065-2019 technical standard and Italian Ministerial Decree 26/2015. The dosing system is made with high-quality materials in compliance with Italian Ministerial Decree 174/2004.

## PRODUCT ORIGIN

 Made in Italy

## SIMILAR PRODUCTS



EasyDos  
CODE: 400101010

## FOR USE WITH



EasyPhos Refill  
CODE: 400103003

## FOR THE PROTECTION OF YOUR PLANT



EasyMag mini  
CODE: 400201002



EasyMag maxi  
CODE: 400202002

SP447.03

Data di emissione: 15/03/2022

Data di revisione: 27/04/2023