



BOSS 8

Descaling pump for water heaters, heat exchangers, wall-hung and floor-standing boilers.

COD: 300601020

TECHNICAL FEATURES

| | |
|-----------------|-----------------------------|
| TANK | 8 L |
| MAX FLOW RATE | 30 L/min |
| CONNECTIONS | 1/2 " |
| MOTOR | 230 V/50 Hz/0,165 kW |
| PRESSURE | 1 bar |
| IP RATING | IP 55 |
| WEIGHT | 7,7 Kg |
| MAX TEMPERATURE | 60 °C |
| DIMENSIONS | H:530 mm L: 440 mm P:330 mm |

PACKAGING FEATURES

| | | |
|------------------------------|----------------------------|----------------------------|
| N. OF PIECES PER EPAL PALLET | 24 | 18 |
| BARCODE EAN | EAN 8050616511379 | EAN 8050616511379 |
| NUMBER OF PIECES PER BOX | 1 | 1 |
| BOX DIMENSIONS | H: 54,2 L: 39,6 P: 39,6 cm | H: 54,2 L: 39,6 P: 39,6 cm |
| EPAL PALLET DIMENSIONS | 80x120x237 cm | 80x120x180 cm |
| PALLET WEIGHT | 241 Kg | 187 Kg |
| PRODUCT WEIGHT | 7,7 Kg | 7,7 Kg |
| BOX WEIGHT | 9 Kg | 9 Kg |
| TARIC CODE | 8413.82.00 | 8413.82.00 |

ADVANTAGES

- Acid resistant material
- Dry running will not damage pump
- The most suitable for domestic boilers
- Hose clips / handles
- Tank easily unscrewable

BENEFITS

- Restores the optimal heat exchange
- Reduces energy consumption and lowers Bills
- Suited for descaling of water heaters, heat exchangers, plastic press moulding machines, wall-hung boilers

MAIN FEATURES

Descaling pump BOSS 8 is the most suitable device for the descale of wall-mounted boilers, boilers, heat exchangers and coils obstructed by limestone. It is characterized by an excellent manageability, high prevalence and flow rate, safety of use and easy maintenance to guarantee the highest results and speed of intervention.

It is completely made with anti-acid material, except for the motor with vertical axis, properly protected with an anti-acid shrinkable membrane.

The motor is assembled on a strong lid on the tank closure, completely unscrewing and removable, to guarantee an extremely easy maintenance.

Equipped with Flow Inverter that guarantees to the descaling liquid to alternatively act at both side of the circuit.

The use of descaling products with inhibitors, created by Manta Ecologica S.r.l. assure a fast intervention and the maximum safety for heating systems and workers. For the correct functioning of the pump use exclusively chemical products of BP descaling line.

It is suggested for a long duration of the device to not leave any acid products inside the tank, once the cleaning process is over, and to let circulate for few minutes the neutralizing solution Neutral Powder, in order to eliminate acid debris present inside the system.

APPLICATION AND USE

Pump for the descaling of boilers, heat exchangers, wall-mounted boilers and floor standing boilers.

WHAT DO I NEED TO INSTALL IT

- Flexible pipes for an easier connection
- Nipples
- Connections
- Typical plumber 'tool for connections of different type

CORRECT INSTALLATION

BOSS 8 pump reaches its best performances with descaling products of BP line. Descaling products have an acid base; for their use, all safety prescriptions reported on the corresponding packages and safety data sheets have to be followed.

Use protective gloves and apron and wear suitable glasses, verifying that the place where you are operating is well-ventilated. During the descaling operations, do not use free flames and/or lamps. The lid of the refill/discharge tank, during its functioning, has to be removed, to aerate the liquid contained inside the tank.

1. Before the insertion of the plug inside the power supply, control that the switch is off.
2. In addition be sure that the pump is good fastened to the tank.
3. Properly close with the lids all pump pipes after having unplugged them from the system at the end of the cleaning operation, in order to avoid any solution spread on the working places.
4. Check in the first place (if possible) if there is enough space inside the device that has to be descaled, to guarantee the passage for the acid solution, otherwise the operation is not possible.
5. Disconnect the outlet and inlet of the device to descale, empty it from the internal water and then connect it to the pump, using equipped pipes.

6. Remove the tank cap and add cold water up to half tank (please notice that operational temperature during descaling must never exceed 60 °C).
7. Connect the pump to the mains; switch it on and start adding slowly descaling chemical, until required concentration is obtained.

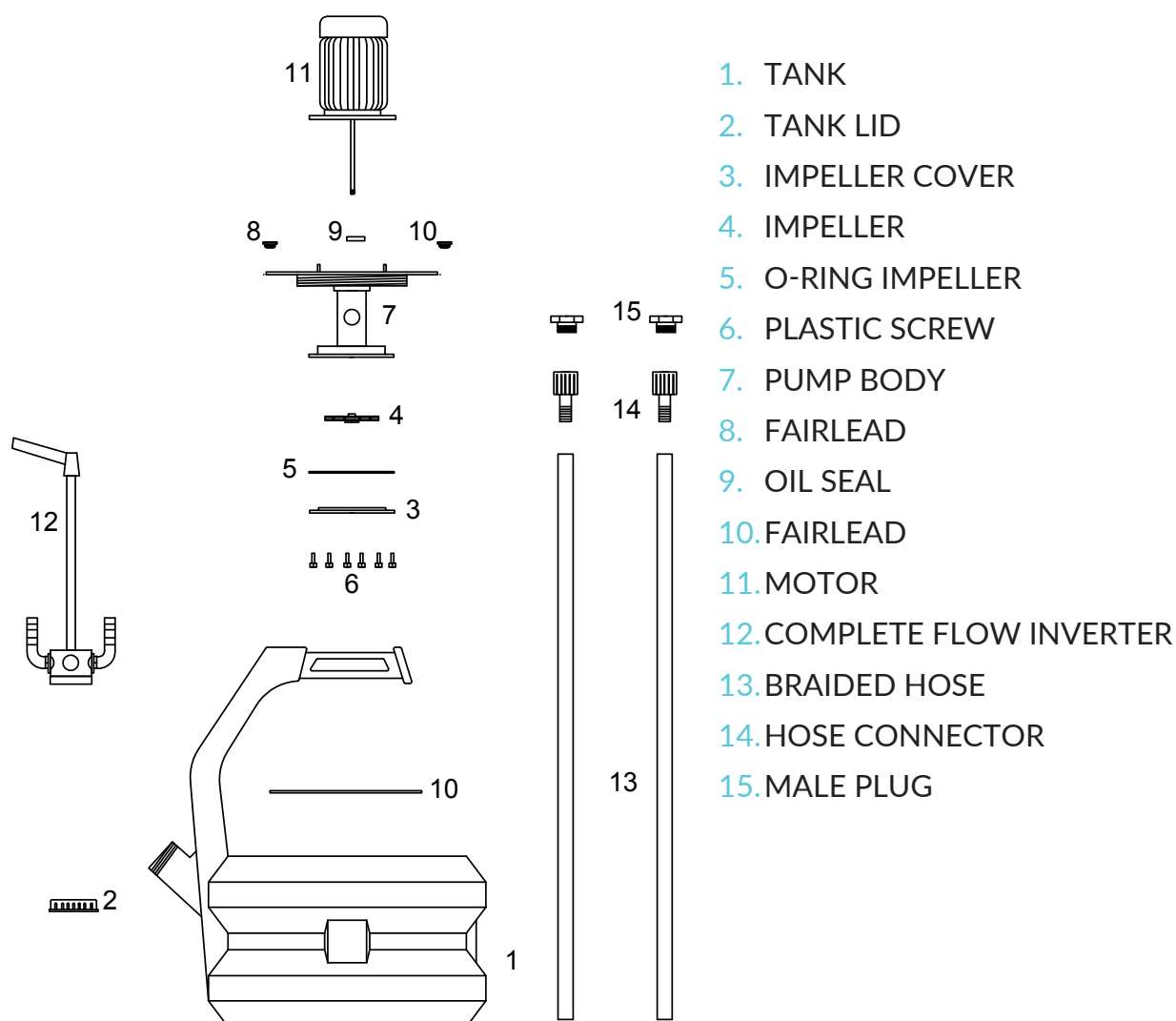
This operation guarantees the correct acid product mixture. Please follow carefully use and safety information reported on the label of product. Anyway, maximum operational time (continuously) of the motor, should not exceed 2 hours. After 2 hours please let the system rest for at least half an hour.

ATTENTION: The flow of the acid solution can be reversed acting on the external control (Flow Inverter) to get a better result.

In the case of strong foam production, dilute the acid solution more and switch the pump briefly off.

Once the descaling operation is complete, replace the acid solution inside the pump with clean water and rinse the descaled element.

EXPLODED VIEW AND SPARE PARTS



1. TANK
2. TANK LID
3. IMPELLER COVER
4. IMPELLER
5. O-RING IMPELLER
6. PLASTIC SCREW
7. PUMP BODY
8. FAIRLEAD
9. OIL SEAL
10. FAIRLEAD
11. MOTOR
12. COMPLETE FLOW INVERTER
13. BRAIDED HOSE
14. HOSE CONNECTOR
15. MALE PLUG

PACKAGE CONTENTS

- 1 bag of fittings
- 1 instruction manual
- Connection pipes: 2 x 2.5 m reinforced hoses
- Pump

MAINTENANCE

After the descaling operation:

1. Avoid letting the equipment work unsupervised.
2. Check that the pH is between 6.5 and 9.5, to neutralize the liquid, both that present in the pump and that inside the element to be descaled, if necessary use a neutralizing product (eg: Neutral powder).
3. Turn off the pump and unplug the power cord first.
4. Wait for the solution circulating in the descaled equipment to return to the tank.

DO NOT LEAVE THE ACID SOLUTION INSIDE THE TANK IN ANY CASE: the vapors could cause damage to the pump itself.

OPTIONAL

1. Bag for terminal connections
COD. 300610001
2. Fittings
COD. 300610003
3. HE Descale adaptor
COD. 300610004



OFFER DESCRIPTION

Descaling pump 1/2" connections and with Flow Inverter.
Polygonal tank of 8 litres and weight 7,7 Kg.
Suitable to descale boilers and heat exchangers.

COMPLIANCE

The product mod. BOSS 8 has been designed and built in accordance with the following European directives (including all applicable amendments):

Directive 2006/42/EC: Machine

Directive 2014/35/UE: Low Voltage

Directive 2014/30/UE: Electromagnetic Compatibility

Directive 2011/65/EC: RoHS

We also declare that the electrical equipment of product complies with the following standards:
CEI-EN 60034-1: Rotating electrical machines. Part 1: Rating and performance.

ORIGIN OF THE PRODUCT

 Made in Italy

SP444.00_BOSS8_20210909

Data di creazione: 09-06-2021

Data di revisione: 09-09-2021